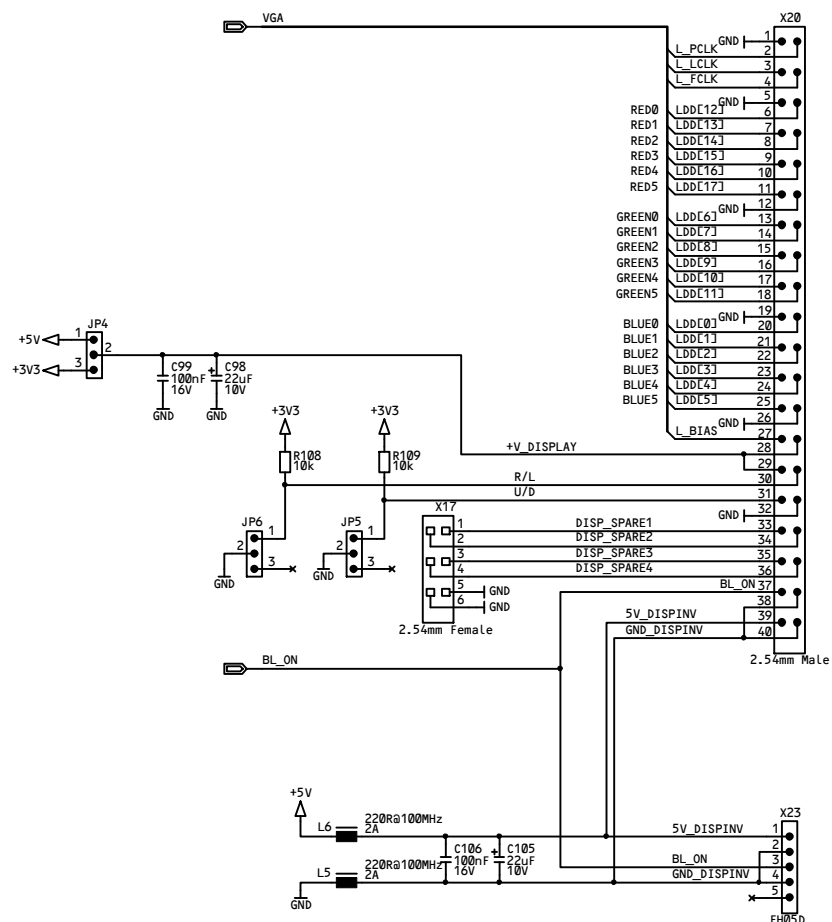


Title		Colibri Evaluation Board 2.0		Toradex	
Document Number		ColibriEvalBoard_V02.10		www.toradex.com	
Page	01	of	01	Variant	
HerP	@HerPageNumber	@HerPageTotal		Rev	@REV
DRW	@drawn_by	@drawn_date	CHK	@checked_by	@checked_date

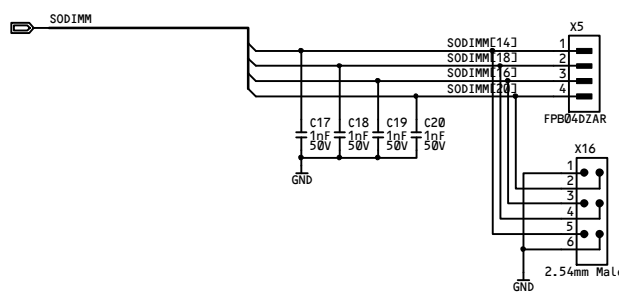


Generic Display for PXA270 Evaluation Board

LCD inverter (fits for GH025A(P1))

Is 5V_DISPIN always 5V? (-> +V_Display)

Attention: LCD inverter connector is probably mirrored on Evalboard 1.0 (Molex datasheet shows circuit 1)

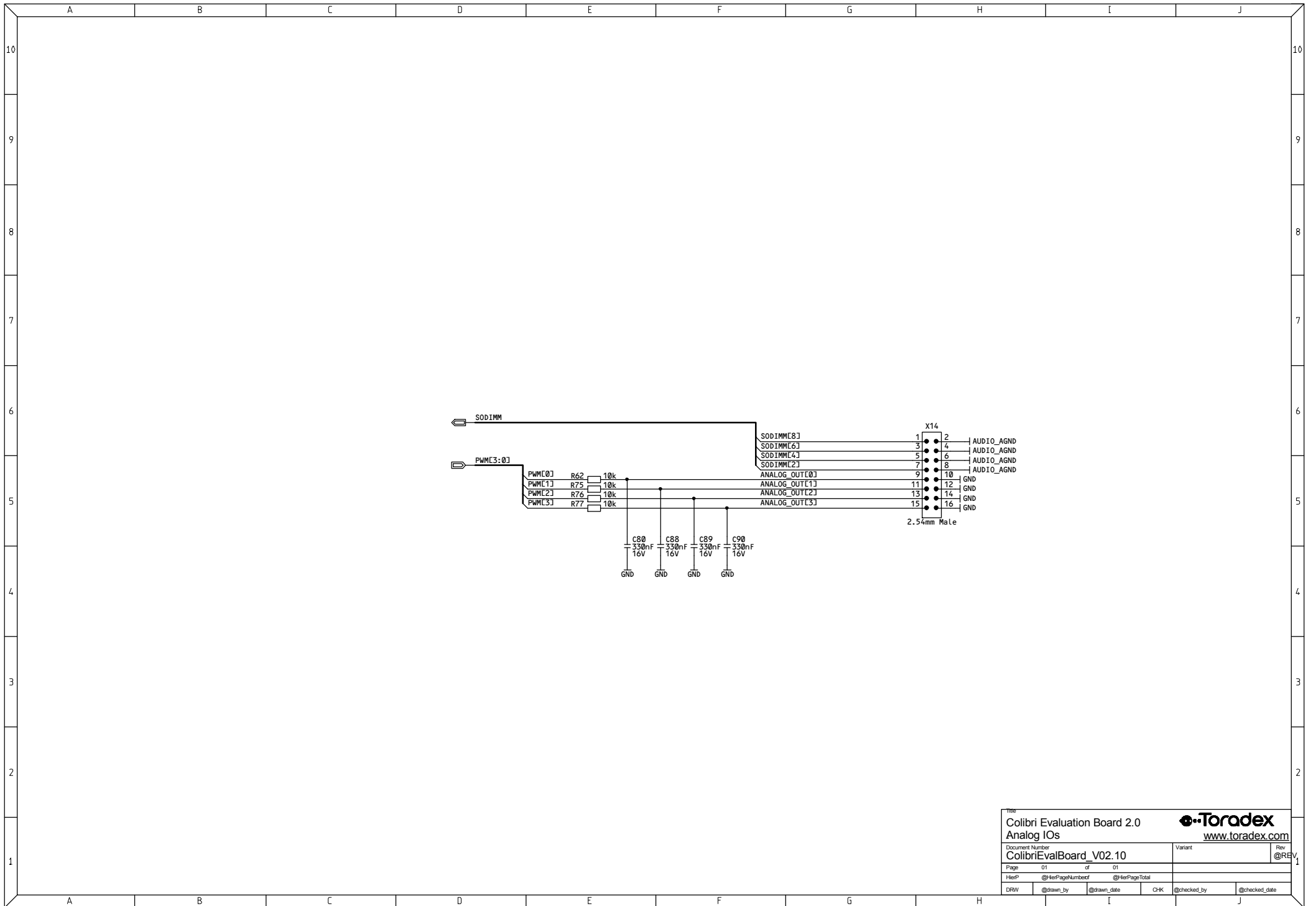



Touch Screen fits for DMC AST-065

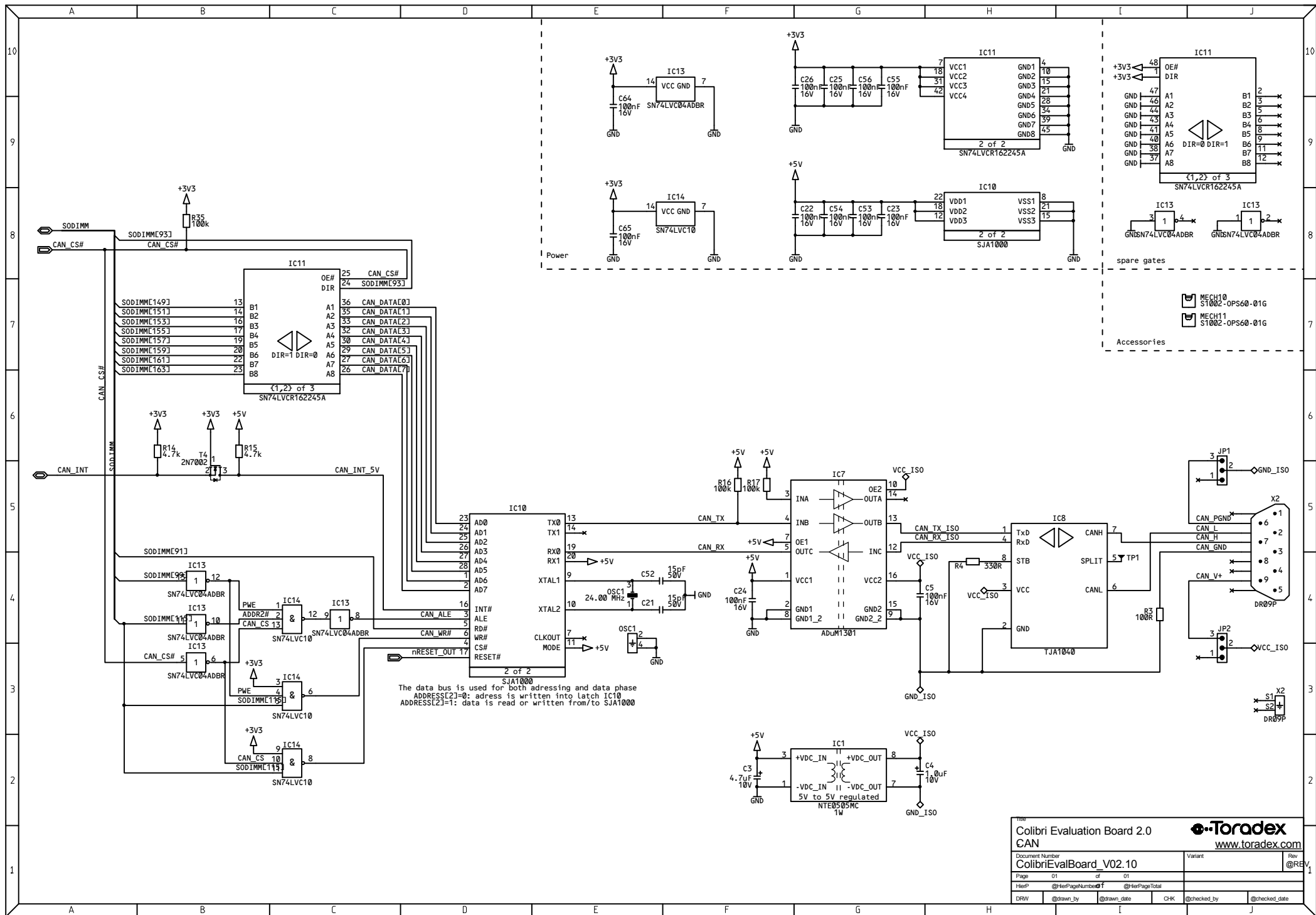
Generic Touch Screen

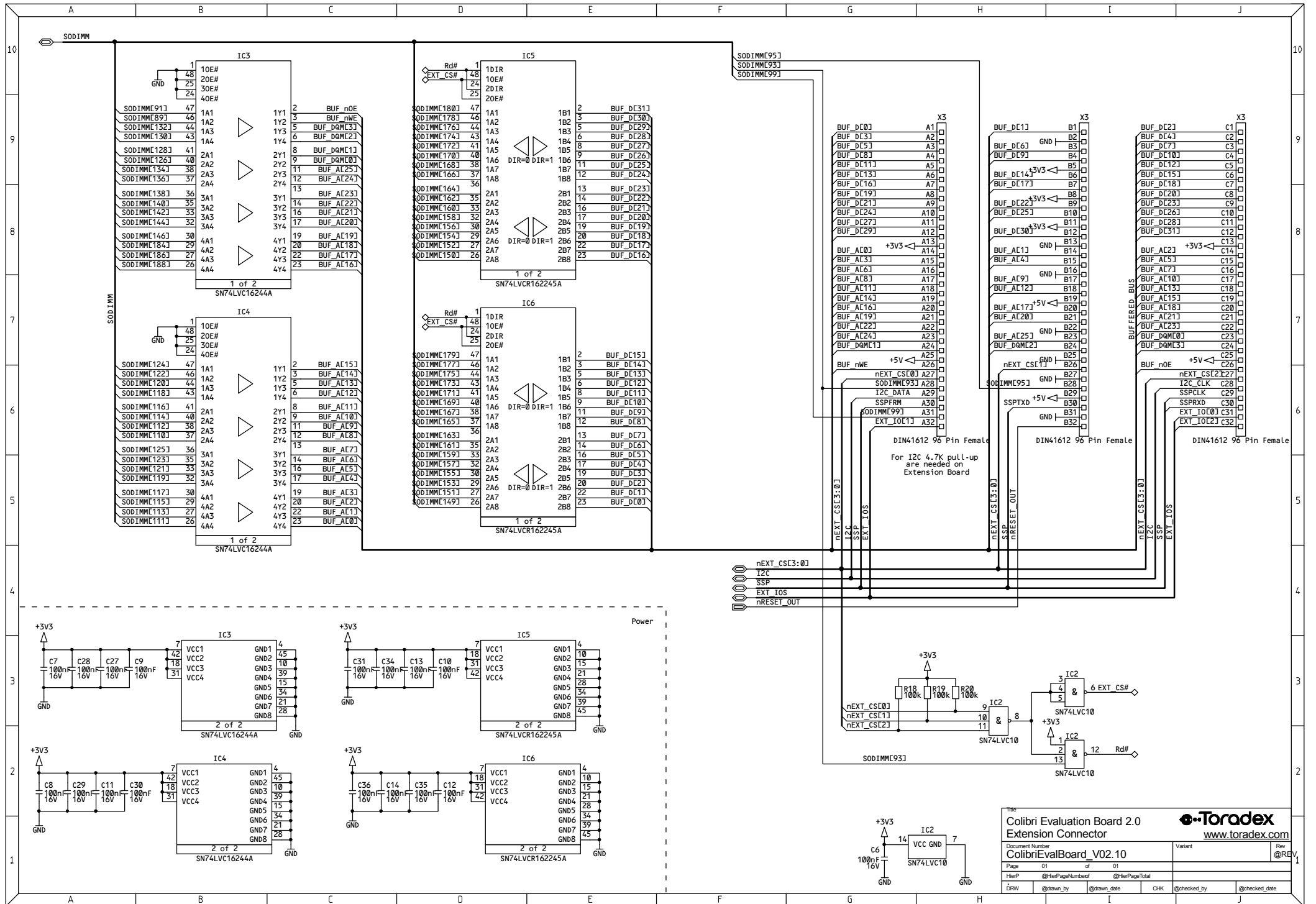
- MECH7 ST002-0PS60-01G
 - MECH8 ST002-0PS60-01G
 - MECH9 ST002-0PS60-01G
- Accessories

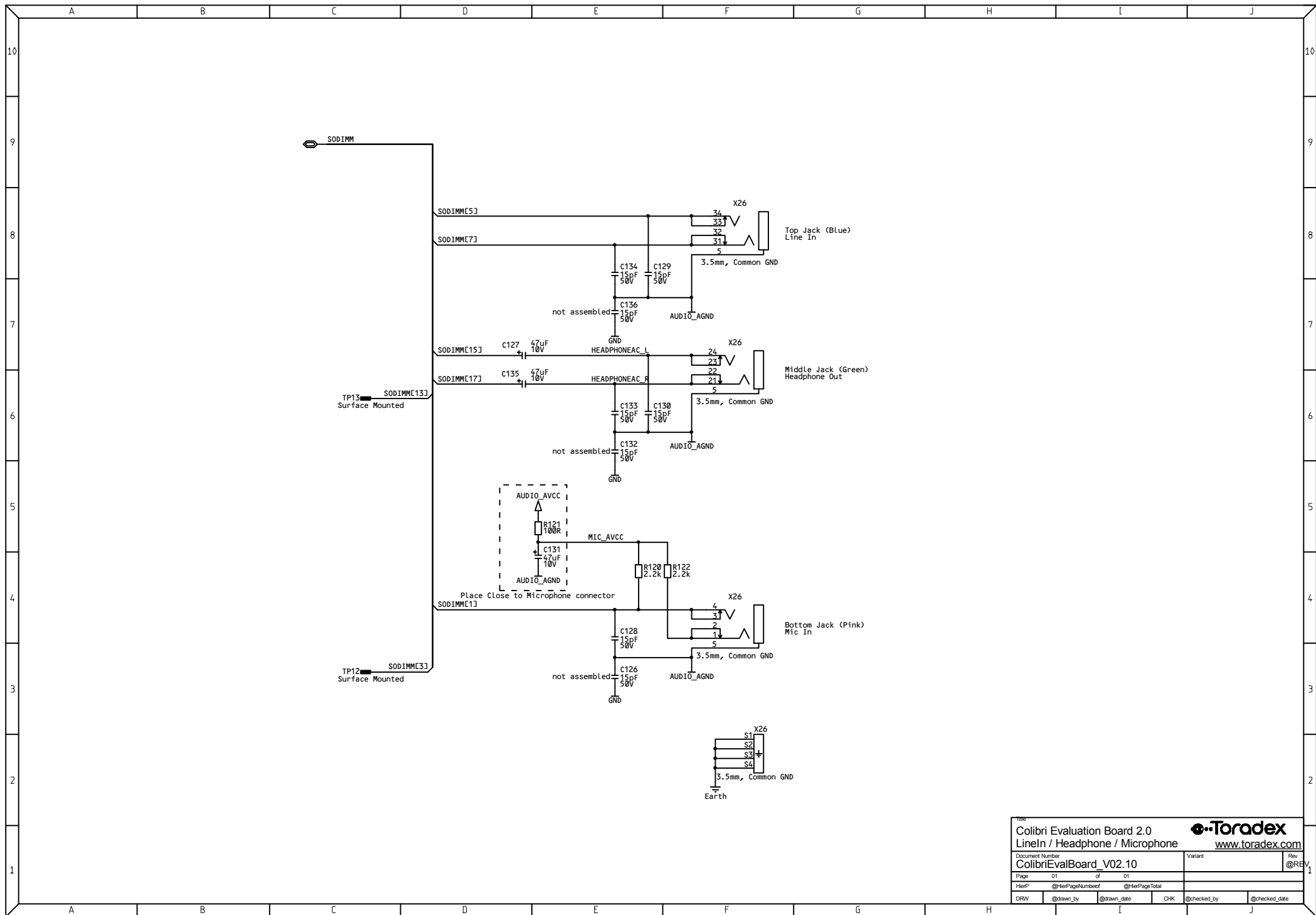
Colibri Evaluation Board 2.0 Generic Display Connector		www.toradex.com	
Document Number	Variant	Rev	@REV_1
ColibriEvalBoard_V02.10			
Page 01	of 01		
HerP	@HerPageNumber	@HerPageTotal	
DRW	@drawn_by	@drawn_date	CHK @checked_by @checked_date



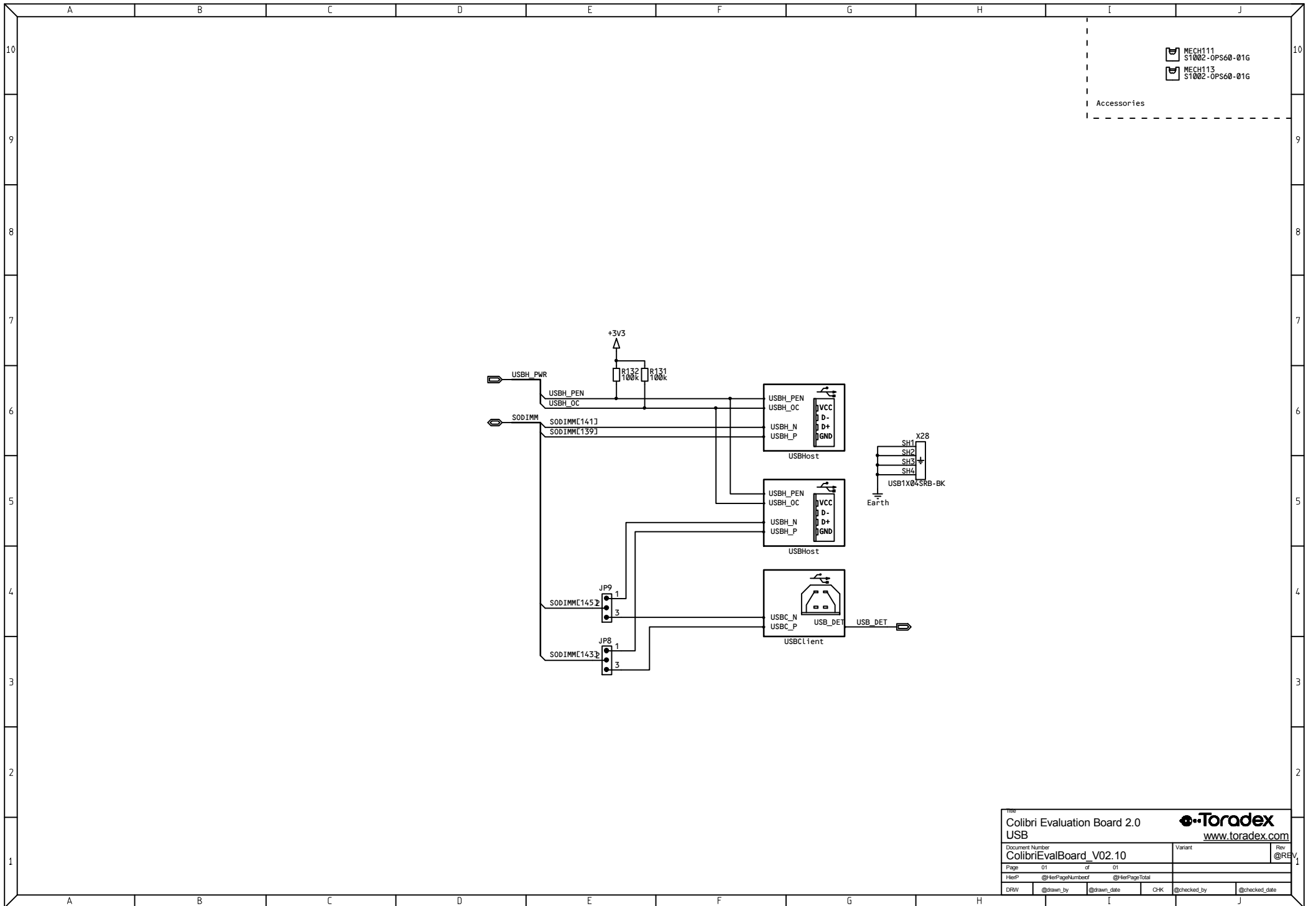
Title		Colibri Evaluation Board 2.0		 www.toradex.com	
Document Number		ColibriEvalBoard_V02.10		Variant	Rev
Page		01 of 01		@REV_1	
HierP		@HierPageNumberof @HierPageTotal			
DRW	@drawn_by	@drawn_date	CHK	@checked_by	@checked_date








Title		Colibri Evaluation Board 2.0		www.toradex.com	
Document Number		Lineln / Headphone / Microphone		Rev	
ColibriEvalBoard_V02.10		Variant		@REV_1	
Page	01	of	01		
HerP	@HerPageNumberof	@HerPageTotal			
DRW	@drawn_by	@drawn_date	CHK	@checked_by	@checked_date

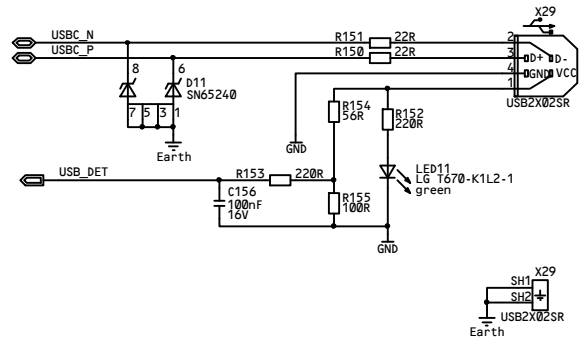



MECH111
ST002-0PS60-01G

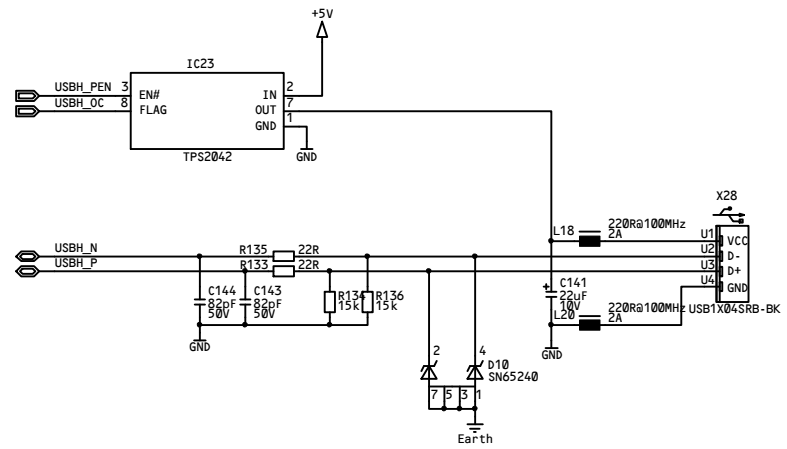
MECH113
ST002-0PS60-01G


Accessories

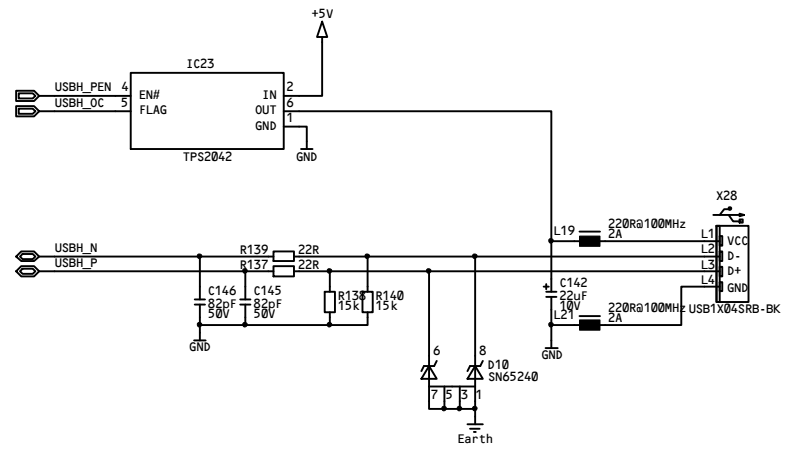
Title		Colibri Evaluation Board 2.0		 www.toradex.com	
Document Number		ColibriEvalBoard_V02.10		Variant	Rev
Page	01	of	01		@REV
HierP		@HierPageNumberof		@HierPageTotal	
DRW	@drawn_by	@drawn_date	CHK	@checked_by	@checked_date




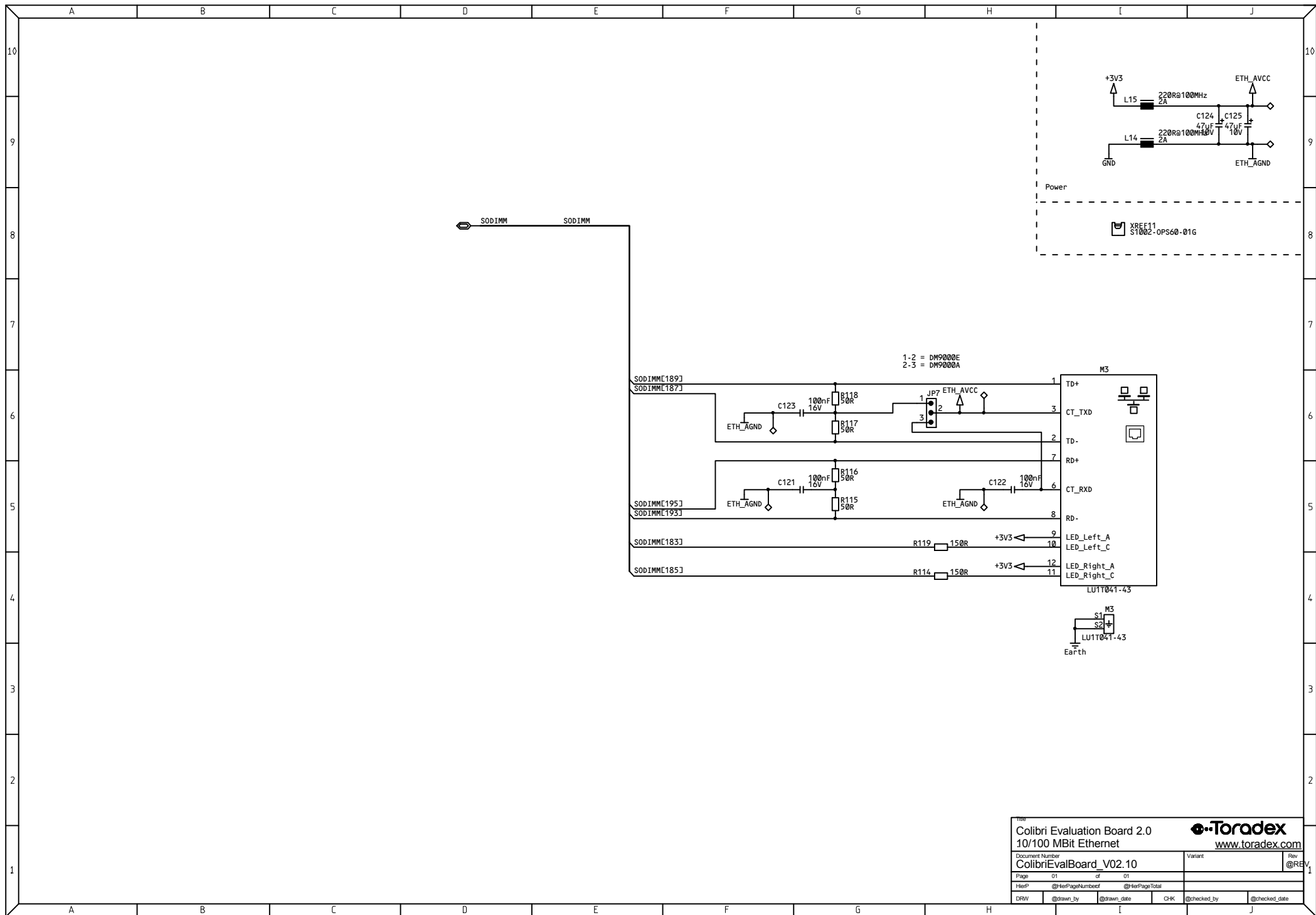
Title		Colibri Evaluation Board 2.0		 www.toradex.com	
Document Number		ColibriEvalBoard_V02.10		Variant	Rev
Page		01 of 01		@REV_1	
HierP		@HierPageNumberof		@HierPageTotal	
DRW	@drawn_by	@drawn_date	CHK	@checked_by	@checked_date

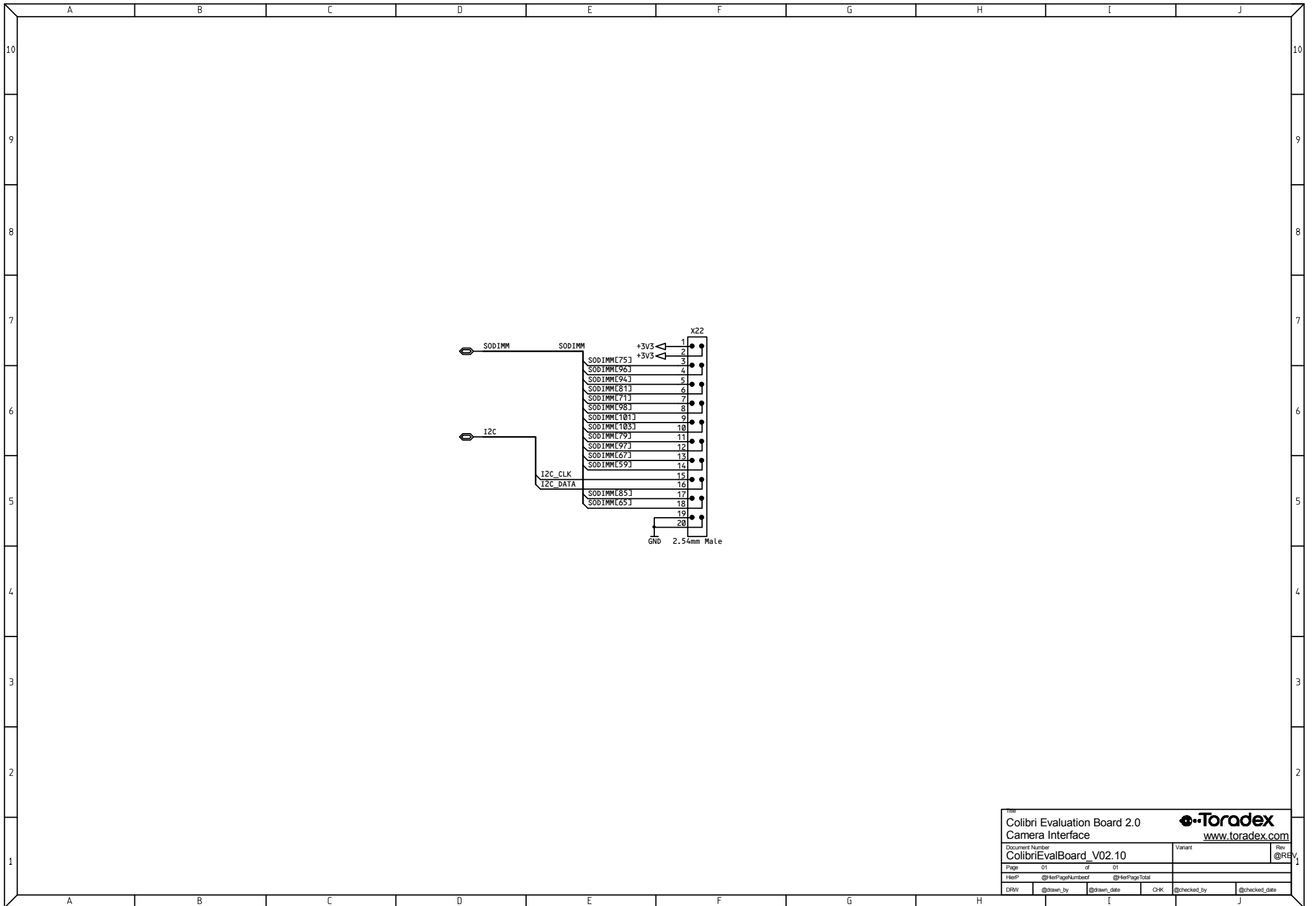



Title		Colibri Evaluation Board 2.0		 www.toradex.com	
Document Number		ColibriEvalBoard_V02.10		Variant	Rev
Page		01 of 01		@REV.1	
HierP		@HierPageNumberof @HierPageTotal			
DRW	@drawn_by	@drawn_date	CHK	@checked_by	@checked_date

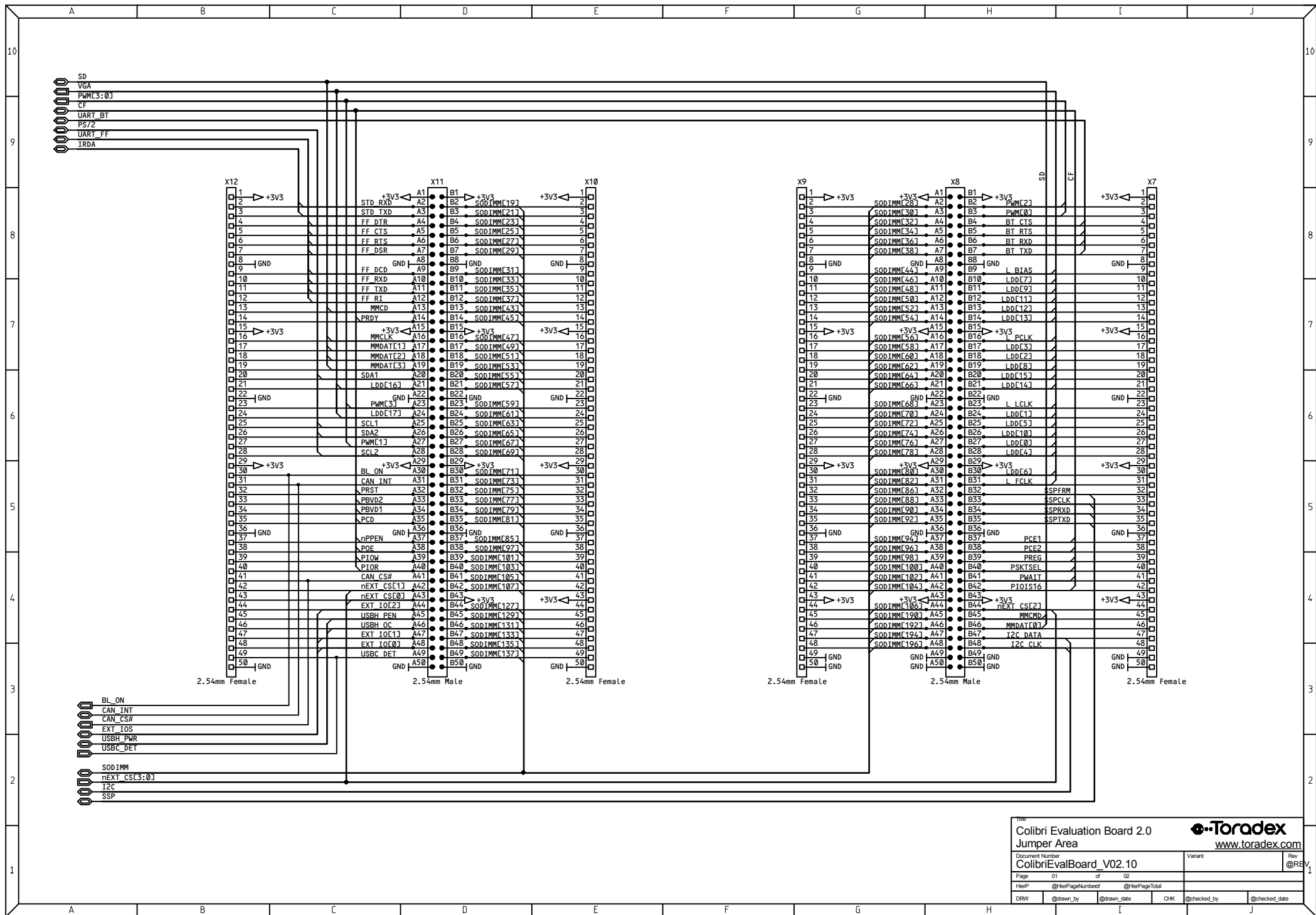



Title		Colibri Evaluation Board 2.0		 www.toradex.com	
Document Number		ColibriEvalBoard_V02.10		Variant	Rev
Page		01 of 01		@REV	
HierP		@HierPageNumberof @HierPageTotal			
DRW	@drawn_by	@drawn_date	CHK	@checked_by	@checked_date





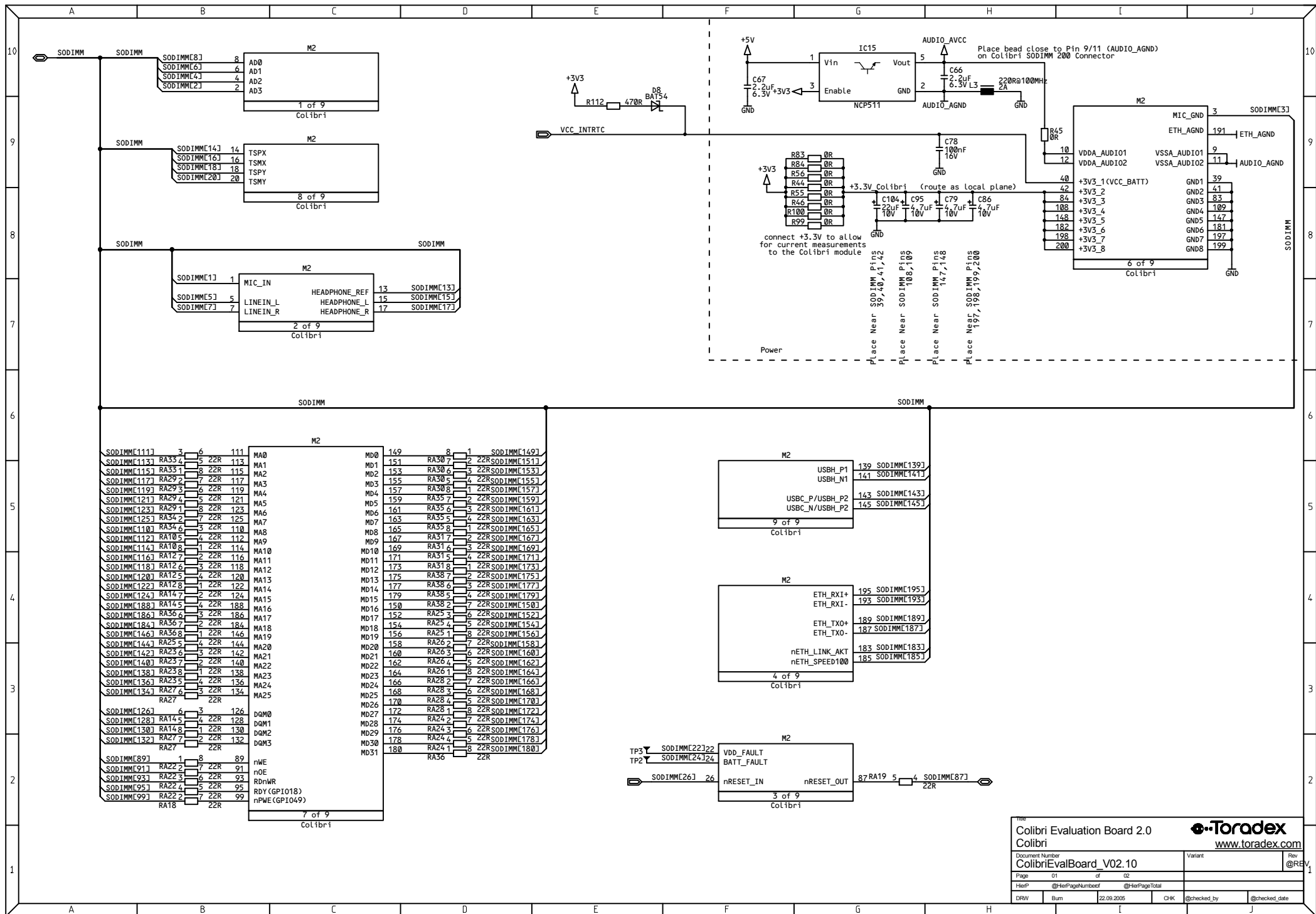
Title		Colibri Evaluation Board 2.0		 www.toradex.com	
Document Number		ColibriEvalBoard_V02.10		Variant	Rev
Page		01 of 01		@REV_1	
HierP		@HierPageNumber of @HierPageTotal			
DRW	@drawn_by	@drawn_date	CHK	@checked_by	@checked_date



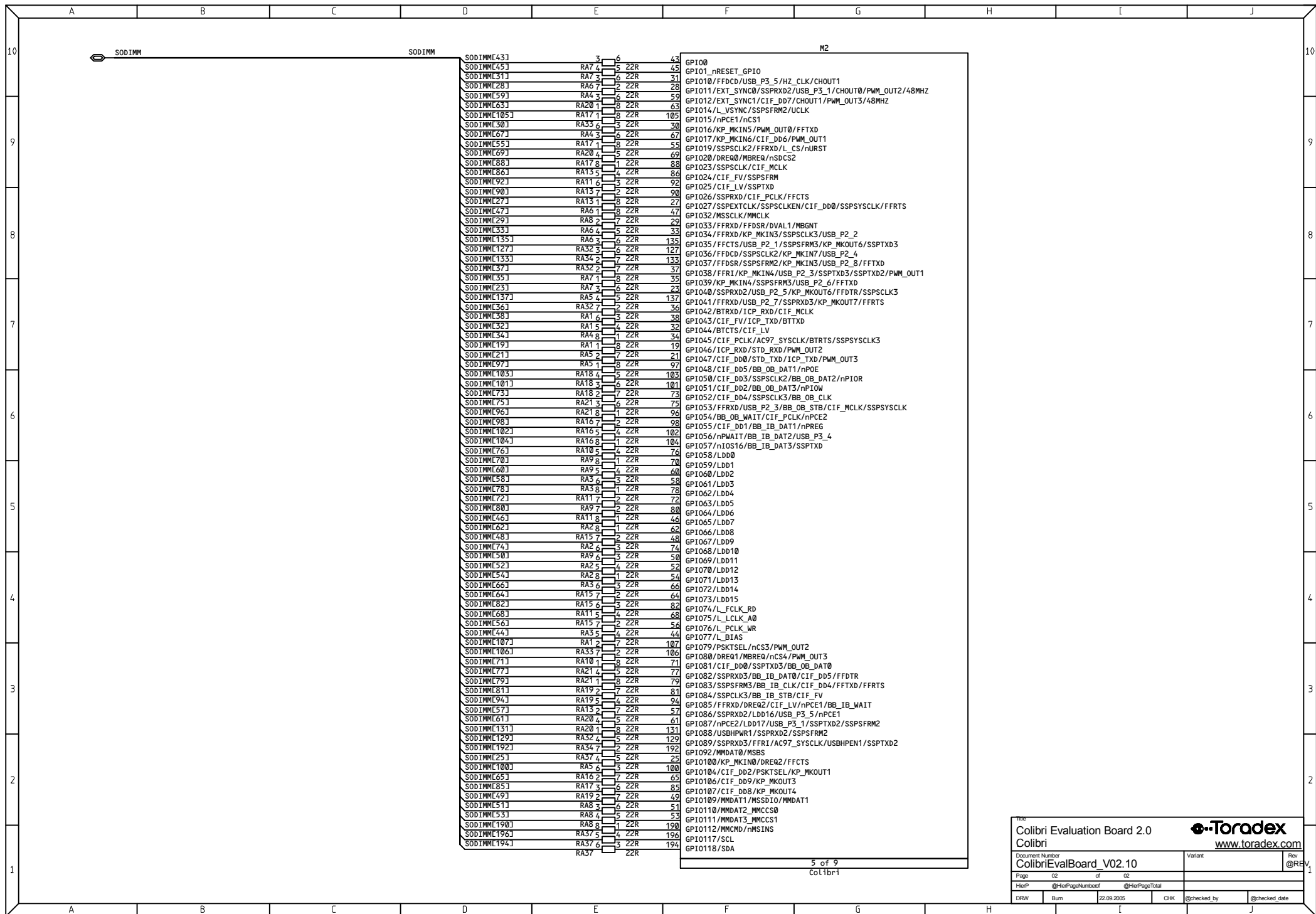
Colibri Evaluation Board 2.0
Jumper Area
 Document Number: ColibriEvalBoard_V02.10
 Variant: @REV_1
 Page 01 of 02
 HierP: @HierPageNumber of @HierPageTotal
 DRW: @drawn_by @drawn_date CHK: @checked_by @checked_date
 www.toradex.com

	A	B	C	D	E	F	G	H	I	J
10										
9										
8										
7										
6										
5										
4										
3										
2										
1										

Colibri Evaluation Board 2.0				www.toradex.com	
Jumper Area					
Document Number	ColibriEvalBoard_V02.10	Variant		Rev	@REV1
Page	02	of	02		
HerP	@HerPageNumberof	@HerPageTotal			
DRW	@drawn_by	@drawn_date	CHK	@checked_by	@checked_date



SODIMM[111]	3	6	111	MA0	MD0	149	8	1	SODIMM[149]	
SODIMM[113]	RA33	4	22R	113	MA1	151	RA30	2	22R SODIMM[151]	
SODIMM[115]	RA31	5	22R	115	MA2	153	RA30	3	22R SODIMM[153]	
SODIMM[117]	RA29	7	22R	117	MA3	155	RA30	4	22R SODIMM[155]	
SODIMM[119]	RA29	5	22R	119	MA4	157	RA30	1	22R SODIMM[157]	
SODIMM[121]	RA29	4	5	22R	121	MA5	159	RA35	7	22R SODIMM[159]
SODIMM[123]	RA29	1	8	22R	123	MA6	161	RA35	4	22R SODIMM[161]
SODIMM[125]	RA32	2	7	22R	125	MA7	163	RA35	5	4 22R SODIMM[163]
SODIMM[107]	RA36	3	22R	110	MA8	165	RA35	6	1 22R SODIMM[165]	
SODIMM[112]	RA105	4	22R	112	MA9	167	RA31	7	2 22R SODIMM[167]	
SODIMM[114]	RA108	1	22R	114	MA10	169	RA31	4	3 22R SODIMM[169]	
SODIMM[116]	RA12	2	22R	116	MA11	171	RA31	5	4 22R SODIMM[171]	
SODIMM[118]	RA12	3	22R	118	MA12	173	RA31	8	1 22R SODIMM[173]	
SODIMM[120]	RA12	4	22R	120	MA13	175	RA38	7	2 22R SODIMM[175]	
SODIMM[122]	RA12	1	22R	122	MA14	177	RA38	6	3 22R SODIMM[177]	
SODIMM[124]	RA14	2	22R	124	MA15	179	RA38	5	4 22R SODIMM[179]	
SODIMM[188]	RA14	4	22R	188	MA16	150	RA38	2	7 22R SODIMM[150]	
SODIMM[186]	RA36	3	22R	186	MA17	152	RA25	3	6 22R SODIMM[152]	
SODIMM[184]	RA36	2	22R	184	MA18	154	RA25	4	5 22R SODIMM[154]	
SODIMM[146]	RA36	1	22R	146	MA19	156	RA25	1	8 22R SODIMM[156]	
SODIMM[144]	RA25	4	22R	144	MA20	158	RA26	2	7 22R SODIMM[158]	
SODIMM[142]	RA23	3	22R	142	MA21	160	RA26	3	6 22R SODIMM[160]	
SODIMM[140]	RA27	2	22R	140	MA22	162	RA26	4	5 22R SODIMM[162]	
SODIMM[138]	RA23	1	22R	138	MA23	164	RA26	1	8 22R SODIMM[164]	
SODIMM[136]	RA23	4	22R	136	MA24	166	RA28	2	7 22R SODIMM[166]	
SODIMM[134]	RA27	5	22R	134	MA25	168	RA28	3	6 22R SODIMM[168]	
RA27			22R		MA26	170	RA28	4	5 22R SODIMM[170]	
SODIMM[126]	6	3	126	DQM0	MD26	172	RA24	8	22R SODIMM[172]	
SODIMM[128]	RA14	4	22R	128	DQM1	174	RA24	7	22R SODIMM[174]	
SODIMM[130]	RA14	1	22R	130	DQM2	176	RA24	6	22R SODIMM[176]	
SODIMM[132]	RA27	7	22R	132	DQM3	178	RA24	5	22R SODIMM[178]	
RA27			22R		MD30	180	RA24	1	8 22R SODIMM[180]	
SODIMM[89]	1	8	89	nWE	MD31	180	RA36	22R		
SODIMM[91]	RA22	7	22R	91						
SODIMM[93]	RA22	3	6	22R						
SODIMM[95]	RA22	4	5	22R						
SODIMM[97]	RA22	2	7	22R						
RA18			22R							

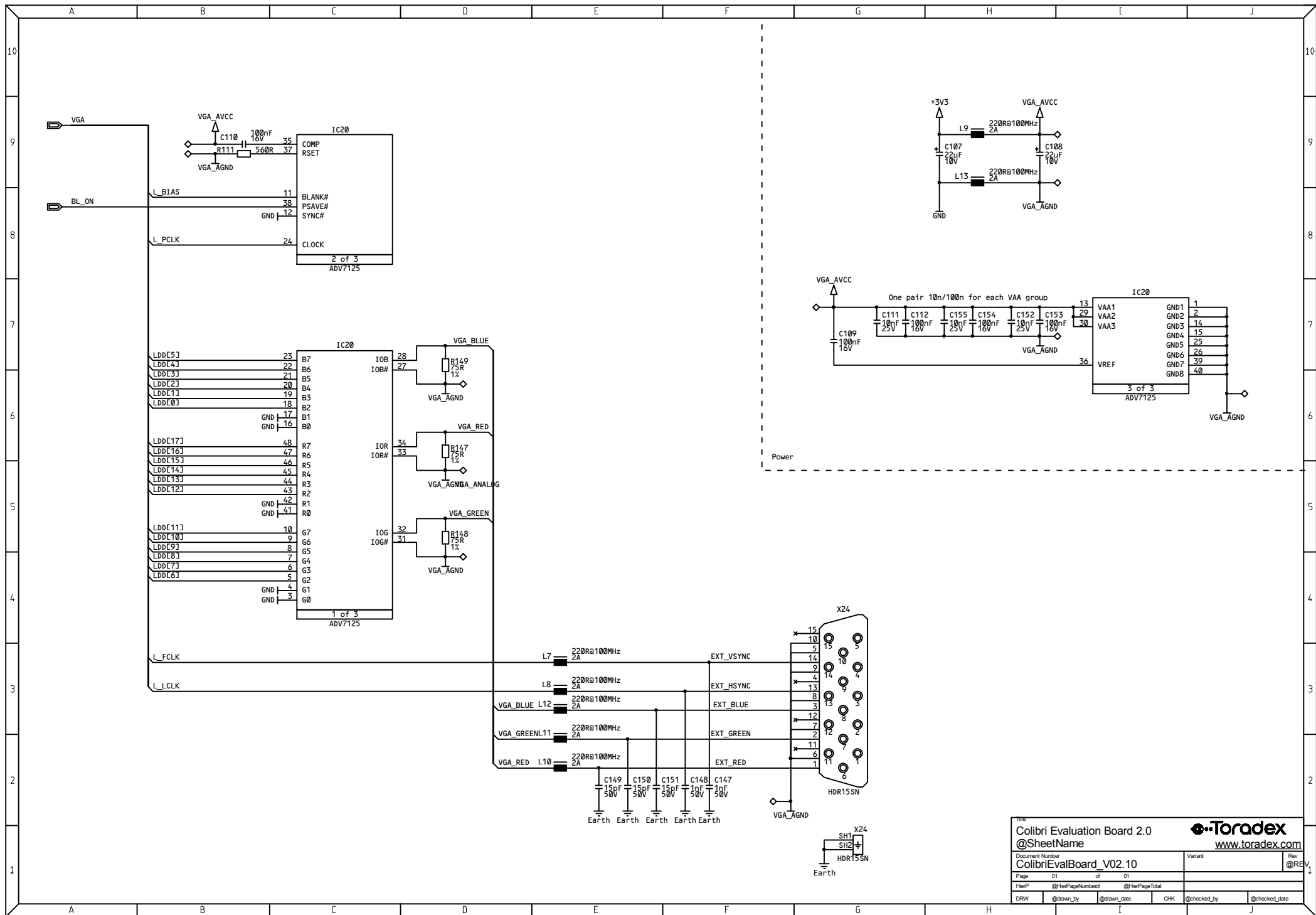


SODIMM Pin	Label	Value	M2 Pin	Label
SODIMM43		3	43	GP100
SODIMM45	RA7	4	45	GP101_nRESET_GP10
SODIMM31	RA7	5	31	GP1010/FFDCD/USB_P3_5/HZ_CLK/CHOUT1
SODIMM28	RA6	7	28	GP1011/EXT_SYNC0/SSPRXD2/USB_P3_1/CHOUT0/PWM_OUT2/48MHZ
SODIMM59	RA4	5	59	GP1012/EXT_SYNC1/CIF_DD7/CHOUT1/PWM_OUT3/48MHZ
SODIMM63	RA20	1	63	GP1014/L_VSYNC/SSPSFRM2/UCLK
SODIMM105	RA17	1	105	GP1015/nPCE1/nCS1
SODIMM30	RA35	6	30	GP1016/KP_MKIN5/PWM_OUT0/FFTXD
SODIMM67	RA4	5	67	GP1017/KP_MKIN6/CIF_DD6/PWM_OUT1
SODIMM55	RA17	1	55	GP1019/SSPSCLK2/FFRXD/L_CS/nURST
SODIMM69	RA20	4	69	GP1020/DREQ0/MBREQ/nDSC2
SODIMM88	RA17	8	88	GP1023/SSPSCLK/CIF_MCLK
SODIMM86	RA13	5	86	GP1024/CIF_FV/SSPSFRM
SODIMM92	RA11	2	92	GP1025/CIF_LV/SSPTXD
SODIMM90	RA13	5	90	GP1026/SSPRXD/CIF_PCLK/FFCTS
SODIMM27	RA13	1	27	GP1027/SSPEXTCLK/SSPSCLKEN/CIF_DD0/SSPSYSCLK/FFRTS
SODIMM47	RA6	1	47	GP1032/MSSCLK/MMCLK
SODIMM29	RA8	2	29	GP1033/FFRXD/FFDSR/DVAL1/MBGNT
SODIMM33	RA6	4	33	GP1034/FFRXD/KP_MKIN3/SSPSCLK3/USB_P2_2
SODIMM135	RA6	1	135	GP1035/FFCTS/USB_P2_1/SSPSFRM3/KP_MKOUT6/SSPTXD3
SODIMM127	RA32	6	127	GP1036/FFDCD/SSPSCLK2/KP_MKIN7/USB_P2_4
SODIMM133	RA34	7	133	GP1037/FFDSR/SSPSFRM2/KP_MKIN3/USB_P2_8/FFTXD
SODIMM37	RA32	7	37	GP1038/FFR1/KP_MKIN4/USB_P2_3/SSPTXD3/SSPTXD2/PWM_OUT1
SODIMM35	RA7	1	35	GP1039/KP_MKIN4/SSPSFRM3/USB_P2_6/FFTXD
SODIMM23	RA7	3	23	GP1040/SSPRXD2/USB_P2_5/KP_MKOUT6/FFDTR/SSPSCLK3
SODIMM137	RA5	4	137	GP1041/FFRXD/USB_P2_7/SSPRXD3/KP_MKOUT7/FFRTS
SODIMM36	RA32	7	36	GP1042/BTRXD/ICP_RXD/CIF_MCLK
SODIMM38	RA1	6	38	GP1043/CIF_FV/ICP_TXD/BTTXD
SODIMM32	RA1	5	32	GP1044/BTCTS/CIF_LV
SODIMM34	RA4	8	34	GP1045/CIF_PCLK/AC97_SYSCLK/BTRTS/SSPSYSCLK3
SODIMM19	RA1	1	19	GP1046/ICP_RXD/STD_RXD/PWM_OUT2
SODIMM21	RA5	2	21	GP1047/CIF_DD0/STD_TXD/ICP_TXD/PWM_OUT3
SODIMM97	RA5	1	97	GP1048/CIF_DD5/BB_OB_DAT1/nPOE
SODIMM103	RA18	4	103	GP1050/CIF_DD3/SSPSCLK2/BB_OB_DAT2/nPIOR
SODIMM101	RA18	3	101	GP1051/CIF_DD2/BB_OB_DAT3/nPIOW
SODIMM73	RA18	2	73	GP1052/CIF_DD4/SSPSCLK3/BB_OB_CLK
SODIMM75	RA21	3	75	GP1053/FFRXD/USB_P2_3/BB_OB_STB/CIF_MCLK/SSPSYSCLK
SODIMM96	RA21	8	96	GP1054/BB_OB_WAIT/ICP_PCLK/nPCE2
SODIMM98	RA16	2	98	GP1055/CIF_DD1/BB_IB_DAT1/nPREG
SODIMM102	RA16	4	102	GP1056/nPWAIT/BB_IB_DAT2/USB_P3_4
SODIMM104	RA16	3	104	GP1057/nIOS16/BB_IB_DAT3/SSPTXD
SODIMM76	RA10	4	76	GP1058/LDD0
SODIMM70	RA9	2	70	GP1059/LDD1
SODIMM60	RA9	1	60	GP1060/LDD2
SODIMM58	RA3	1	58	GP1061/LDD3
SODIMM78	RA3	8	78	GP1062/LDD4
SODIMM72	RA11	2	72	GP1063/LDD5
SODIMM80	RA9	7	80	GP1064/LDD6
SODIMM46	RA11	8	46	GP1065/LDD7
SODIMM62	RA2	1	62	GP1066/LDD8
SODIMM48	RA15	7	48	GP1067/LDD9
SODIMM74	RA2	6	74	GP1068/LDD10
SODIMM50	RA9	3	50	GP1069/LDD11
SODIMM52	RA2	5	52	GP1070/LDD12
SODIMM54	RA2	8	54	GP1071/LDD13
SODIMM66	RA3	6	66	GP1072/LDD14
SODIMM64	RA15	2	64	GP1073/LDD15
SODIMM82	RA15	3	82	GP1074/L_FCLK_RD
SODIMM68	RA11	6	68	GP1075/L_LCLK_A0
SODIMM56	RA15	7	56	GP1076/L_PCLK_WR
SODIMM44	RA3	5	44	GP1077/L_BIAS
SODIMM107	RA1	2	107	GP1079/PSKSEL/nCS3/PWM_OUT2
SODIMM106	RA35	7	106	GP1080/DREQ1/MBREQ/nCS4/PWM_OUT3
SODIMM71	RA10	1	71	GP1081/CIF_DD0/SSPTXD3/BB_OB_DAT0
SODIMM77	RA21	4	77	GP1082/SSPRXD3/BB_IB_DAT0/CIF_DD5/FFDTR
SODIMM79	RA21	8	79	GP1083/SSPSFRM3/BB_IB_CLK/CIF_DD4/FFTXD/FFRTS
SODIMM81	RA19	4	81	GP1084/SSPSCLK3/BB_IB_STB/CIF_FV
SODIMM94	RA19	5	94	GP1085/FFRXD/DREQ2/CIF_LV/nPCE1/BB_IB_WAIT
SODIMM57	RA13	7	57	GP1086/SSPRXD2/LDD16/USB_P3_5/nPCE1
SODIMM61	RA20	4	61	GP1087/nPCE2/LDD17/USB_P3_1/SSPTXD2/SSPSFRM2
SODIMM131	RA20	1	131	GP1088/USBHPWR1/SSPRXD2/SSPSFRM2
SODIMM129	RA32	1	129	GP1089/SSPRXD3/FFR1/AC97_SYSCLK/USBHPEN1/SSPTXD2
SODIMM192	RA34	7	192	GP1092/MMDAT0/MSBS
SODIMM25	RA37	4	25	GP10100/KP_MKIN0/DREQ2/FFCTS
SODIMM100	RA5	4	100	GP10104/CIF_DD2/PSKSEL/KP_MKOUT1
SODIMM65	RA16	2	65	GP10106/CIF_DD9/KP_MKOUT3
SODIMM85	RA17	1	85	GP10107/CIF_DD8/KP_MKOUT4
SODIMM49	RA19	2	49	GP10109/MMDAT1/MSSDIO/MMDAT1
SODIMM51	RA8	3	51	GP10110/MMDAT2_MMCCS0
SODIMM53	RA8	4	53	GP10111/MMDAT3_MMCCS1
SODIMM190	RA8	1	190	GP10112/MMCMD/nMSINS
SODIMM196	RA37	5	196	GP10117/SCL
SODIMM194	RA37	6	194	GP10118/SDA

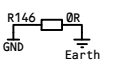
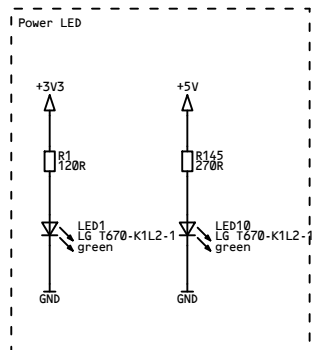
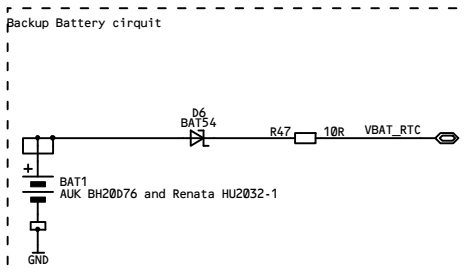
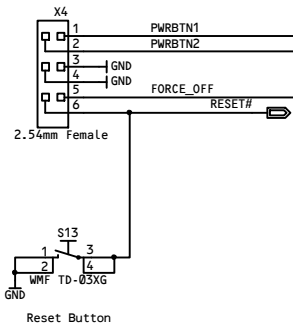
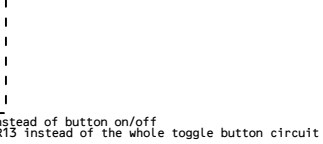
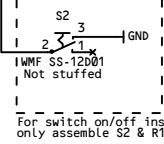
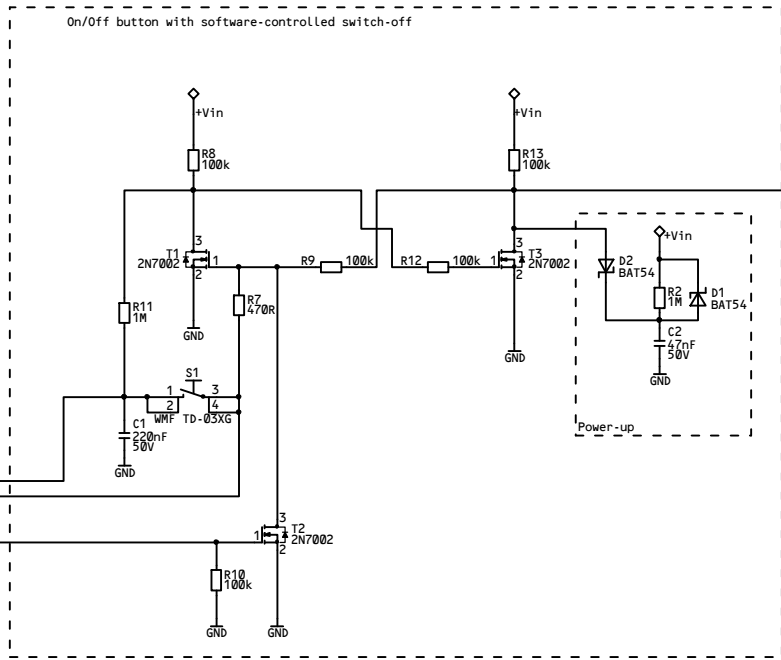
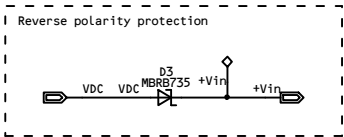
Colibri Evaluation Board 2.0
Colibri

Toradex
www.toradex.com

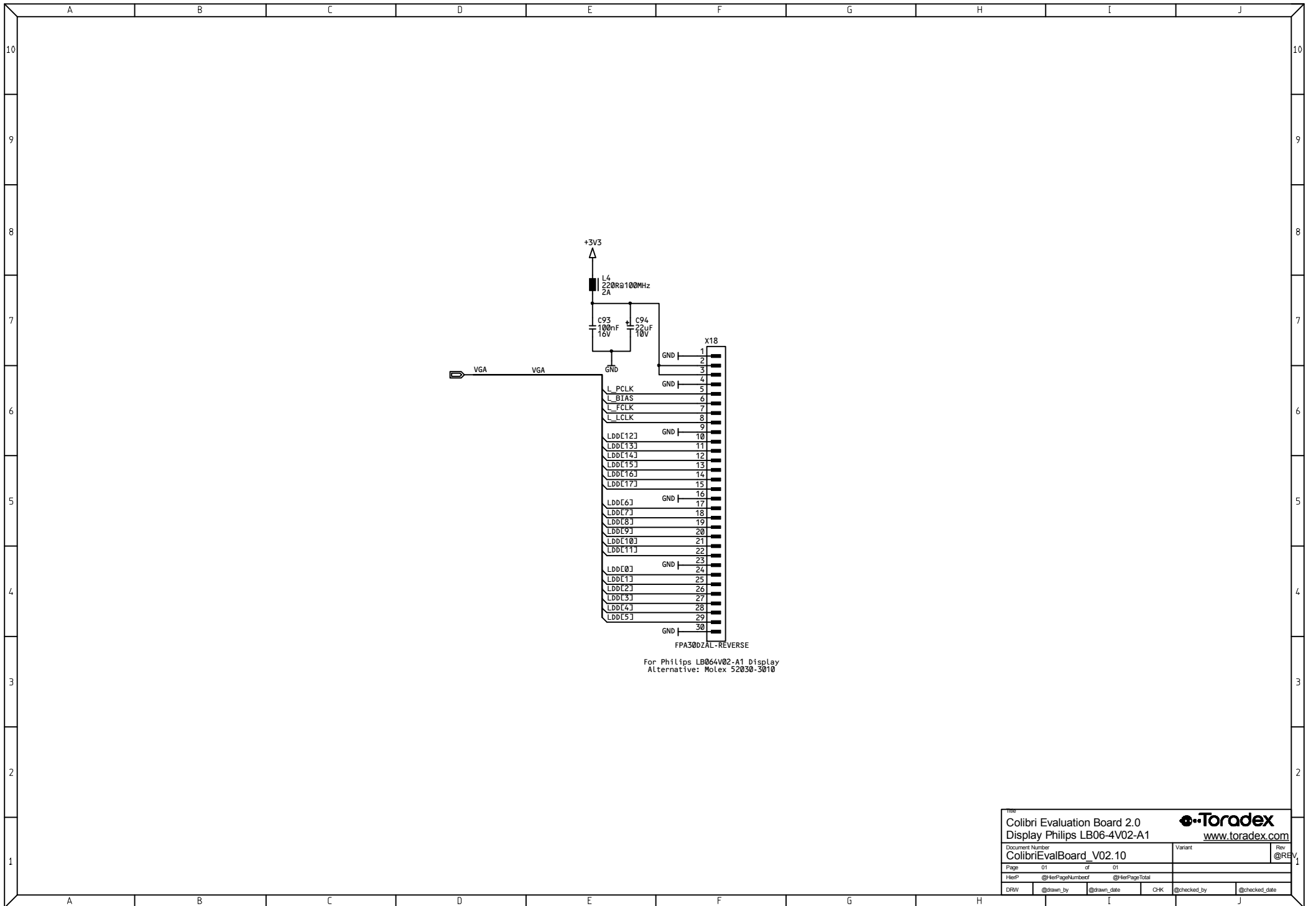
Document Number	ColibriEvalBoard_V02.10	Variant		Rev	@REV_1
Page	02	of	02		
HierP	@HierPageNumber	@HierPageTotal			
DRW	Bum	22.09.2005	CHK	@checked_by	@checked_date

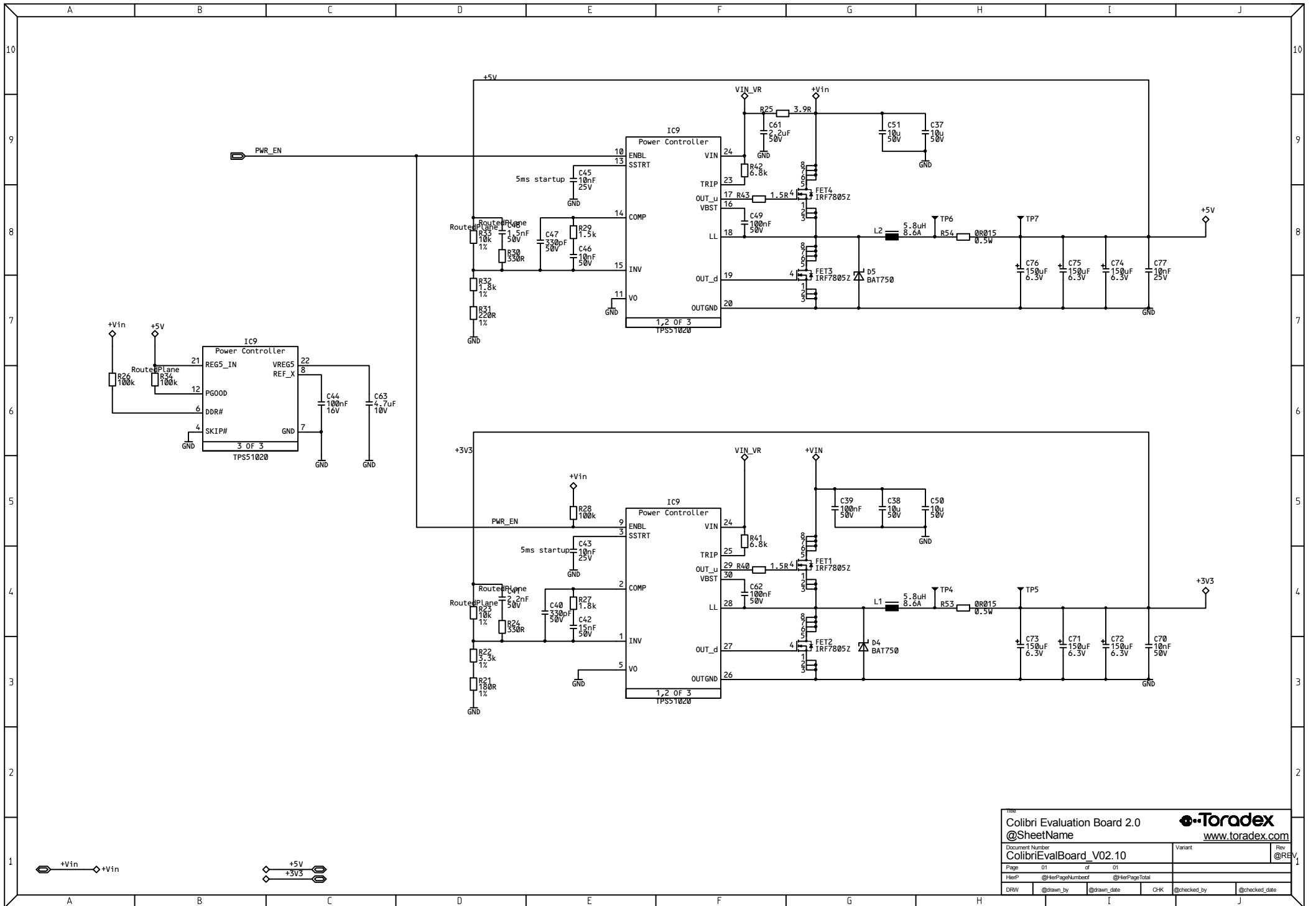


Colibri Evaluation Board 2.0 @SheetName			
Document Number ColibriEvalBoard_V02.10		Variant @REV_1	
Page	01	of	01
HierP @HierPageNumberof		@HierPageTotal	
DRW	@drawn_by	@drawn_date	CHK @checked_by @checked_date

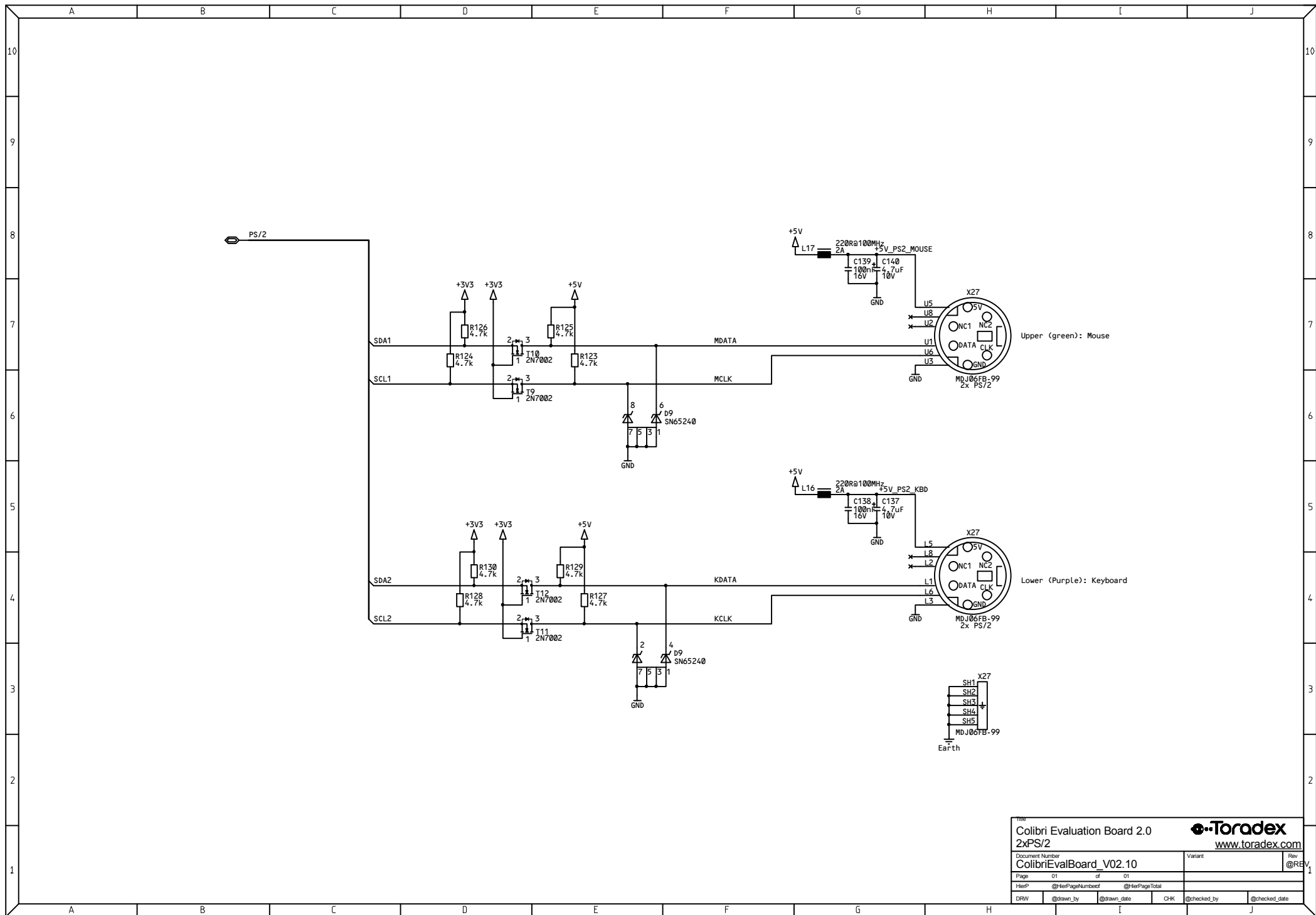


Colibri Evaluation Board 2.0		www.toradex.com	
Power Supply Supplement			
Document Number	ColibriEvalBoard_V02.10	Variant	Rev @REV.1
Page	01 of 01		
HerP	@HerPageNumber	@HerPageTotal	
DRW	@drawn_by	@drawn_date	CHK @checked_by @checked_date

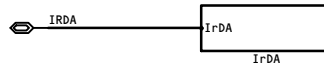
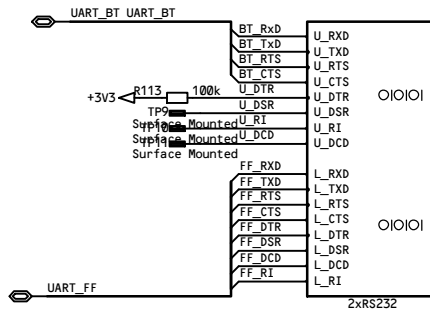





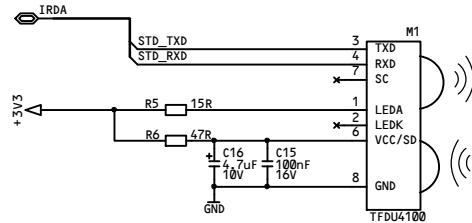
Colibri Evaluation Board 2.0			
@SheetName		www.toradex.com	
Document Number	ColibriEvalBoard_V02.10	Variant	Rev @REV_1
Page	01 of 01		
HerP	@HerPageNumber	@HerPageTotal	
DRW	@drawn_by	@drawn_date	CHK @checked_by @checked_date




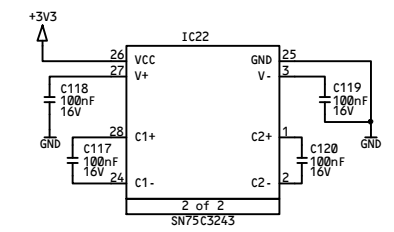
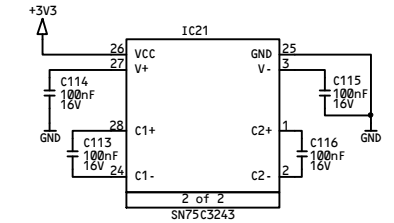
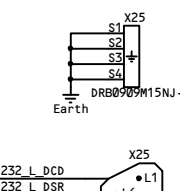
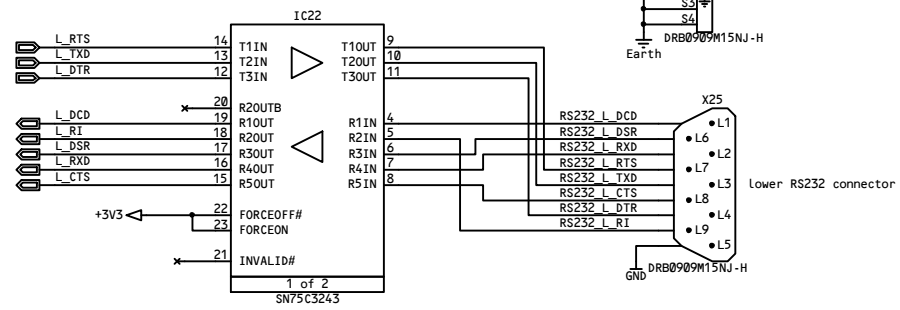
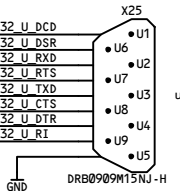
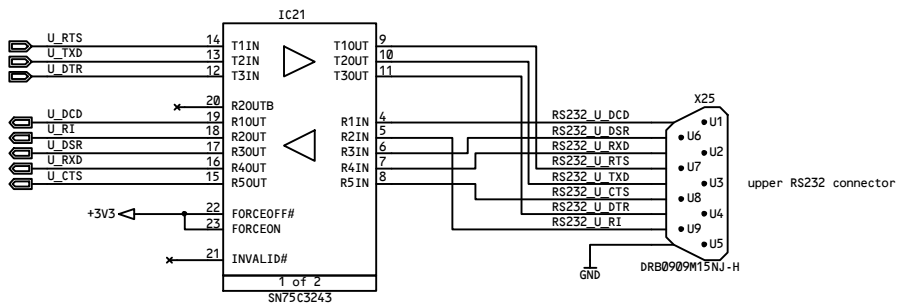
Title		Colibri Evaluation Board 2.0		Toradex	
Document Number		2xPS/2		www.toradex.com	
ColibriEvalBoard_V02.10		Variant		Rev @REV_1	
Page	01	of	01		
HierP		@HierPageNumberof		@HierPageTotal	
DRW	@drawn_by	@drawn_date	CHK	@checked_by	@checked_date



Title		Colibri Evaluation Board 2.0		 www.toradex.com	
Document Number		ColibriEvalBoard_V02.10		Variant	Rev
Page		01 of 01		@REV_1	
HierP		@HierPageNumberof @HierPageTotal			
DRW	@drawn_by	@drawn_date	CHK	@checked_by	@checked_date

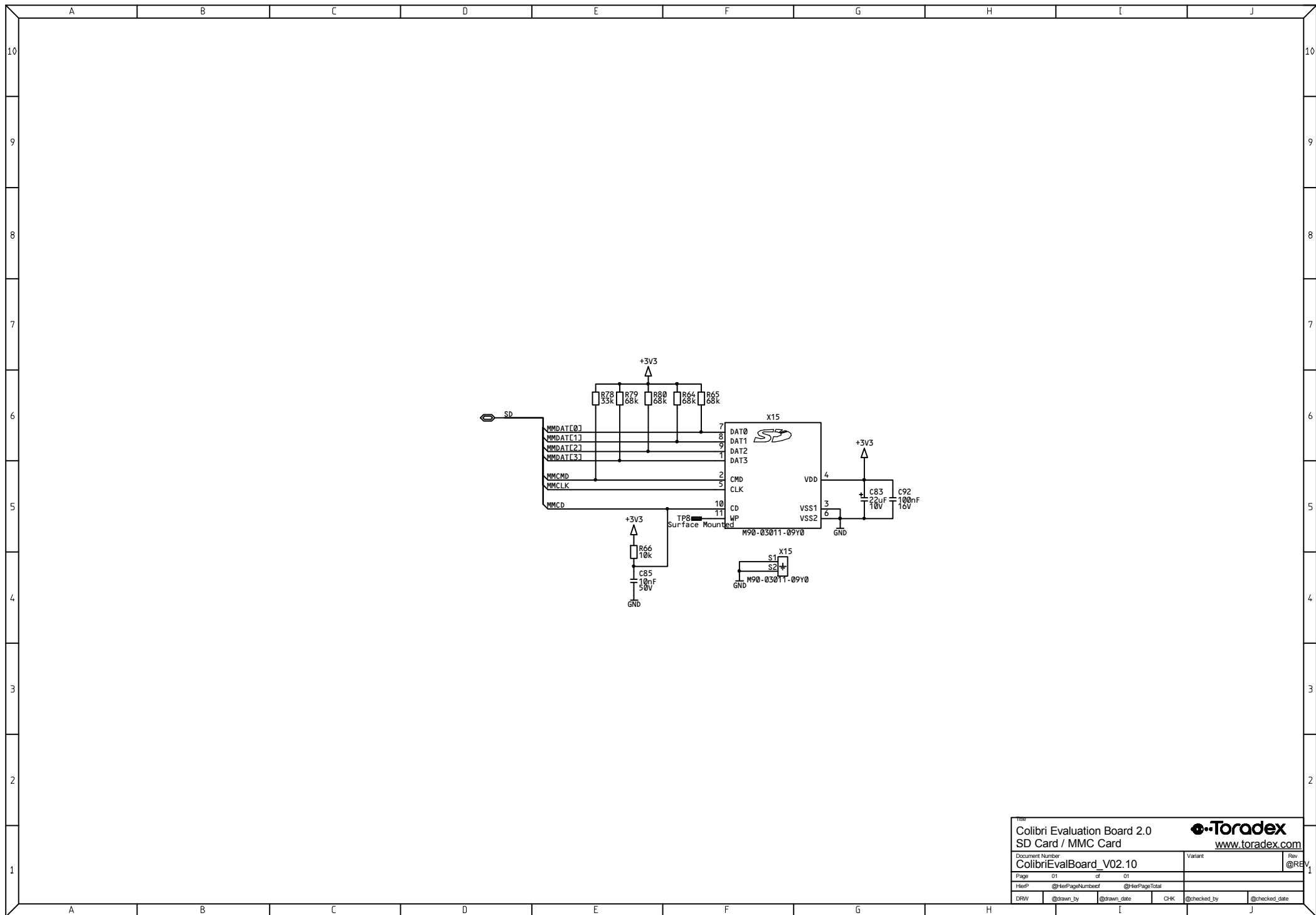


Title		Colibri Evaluation Board 2.0		 www.toradex.com	
Document Number		ColibriEvalBoard_V02.10		Variant	Rev
Page		01 of 01		@REV 1	
HierP		@HierPageNumberof @HierPageTotal			
DRW	@drawn_by	@drawn_date	CHK	@checked_by	@checked_date



Power

Title		Colibri Evaluation Board 2.0		www.toradex.com	
Document Number		2 x RS232		Rev	
ColibriEvalBoard_V02.10		Variant		@REV_1	
Page	01	of	01		
HerP	@HerPageNumberof	@HerPageTotal			
DRW	@drawn_by	@drawn_date	CHK	@checked_by	@checked_date



Title		Colibri Evaluation Board 2.0		www.toradex.com	
Document Number		SD Card / MMC Card			
ColibriEvalBoard_V02.10		Variant		Rev @REV	
Page 01 of 01					
HierP @HierPageNumberof		@HierPageTotal			
DRW	@drawn_by	@drawn_date	CHK	@checked_by	@checked_date